

KENTUCKY CAMP

CHRONICLE



Newsletter of the Friends of Kentucky Camp

February 1998

Kentucky Camp Centennial

by Evalyn Neuhaus

HOW FAR CAN WE GO? Now that 1998 is here and the millennium isn't far away, the *Friends of Kentucky Camp* should reevaluate their goals. Why? A century milestone for Kentucky Camp is quickly approaching: in 2004, Kentucky Camp turns 100.

As members and volunteers of the *Friends* work with the Forest Service to restore Kentucky Camp to its original appearance, consider: What is your vision of Kentucky Camp in 2004? What does Kentucky Camp mean to you personally? And how should we celebrate the upcoming centennial?

This newsletter wants to hear from all the members on their opinions. Each essay, in whole or in part, will be published in the newsletter. New perspectives and fresh ideas will certainly be considered for future work projects. Ideas to consider before writing your essay –

1. Think about what **you** want to do at Kentucky Camp.
2. Express **your** ideas for future projects.
3. What would **you** like to see finished by 2004?

Please send your essays to Mary Farrell, Coronado National Forest, 300 W. Congress Street, Tucson, Arizona 85701.

To start the ball rolling, I'll express my vision of Kentucky Camp in 2004. I would like to see

Building D (the "Hotel"/ Office Building) with all windows, doors, and the proposed porch in place.

Maybe not every room will be finished inside, but at least half of the rooms will be usable for meetings, a formal visitors' center, and an orientation room for living history lectures. Walls of pictures, past and present, before and after projects, and work-in-progress photographs will show visitors the gargantuan restoration task the *Friends* took on. The results clearly show the progress which has been made in a few short years.

Members, put on your thinking caps and get out your pencils. Let's hear from You! Each member's ideas and visions are important.



VALENTINE'S DAY AT KC

Bring your family, your friends, and your sweetheart to Kentucky Camp February 14 for a fun-filled getaway. Commune with history, feel the sensual power of mud between your fingers, or sand & scrape & paint to your heart's content.

Welcome to New Friends!

Larry and Ann Adams
Bruce & Cathy Anderson
Cathy Boushey
Jessica & Jayne Dotson
Robert D. Mullens
Dave & Betty Bear

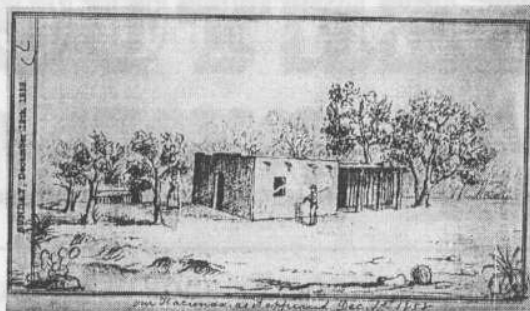
Clippings by Lew Orrell

It happened on the western slope of the Santa Ritas – just over a high ridge from the area that became Kentucky Camp. It had been an unremarkable afternoon in early July of 1858 until the crack of a rifle shot shattered the sylvan quiet, soon followed by the thrashings of two men racing downhill. Each ran as though his life depended on his feet. It did. They were closely pursued by a very large and very angry cinnamon bear. He had been the target for the shot.

McCoy was close to losing the race when he spotted a young tree in his path. Clambering up the trunk, he wedged himself into a crotch. As the bear reared to claw him down, McCoy drew his pistol, aimed it point blank into the bear's face and pulled the trigger. Misfire. Again and again he pulled the trigger. Three times the gun misfired. The odds now favored McCoy's joining his ancestors in Hunters' Valhalla.

Lady Luck reversed the odds when she diverted the bear's attention to William Randall who was still scrambling in the open. Resuming the chase, the bear was closing in on Randall and within reach when the bear dropped dead in his tracks. The rifle bullet had smashed through his vital organs. His antagonists lived to "sport" another day.

McCoy and Randall were from "Santa Rita Town," or the *Hacienda de Santa Rita*, which was the base for the workers at the nearby Hacienda Mine. But the bear, where was his home base, the eastern or the western slopes? If on the eastern, his location that afternoon, though tragic, is understandable – curiosity brought him over the ridge. There certainly was no activity around his home territory. Except, of course, the occasional Apaches who slipped through the pass in the mountains



north of today's Greaterville. The bear would pay them little attention as they, like the Mexicans, revered bears and would not harm them.

But the western slopes. What a vantage point for watching Charles Poston, the "Father of Arizona," in action as he turned the deserted presidio of Tubac into the hospitality Mecca of the southwest. No traveler was refused a place to rest his head nor a seat at a table set with beef, venison, mutton, and fowl washed down with whiskey, brandy, and the best French wines from San Francisco. Enlightened dinner conversation in one's choice of four languages. Attractive table companions with charm, wit, and sparkling dark eyes, who played, sang and danced admirably and were capable of separating one from his wages with a few hands of monte. In addition to Poston, one might be joined at the table by Pumpelly, or the Wrightson brothers or Grosvenor or Hopkins or, even, Major Heintzelman.



Horace C. Grosvenor

The Major was largely responsible for reopening the region to the mining that brought these men to Tubac. Each left his mark on the area; some, their names. All contributed greatly to making the Federal government aware of the mining potential of southwestern Arizona and in forcing the creation of Arizona Territory. What tales our cinnamon bear might have had to share with his den mates during the winters' hibernations!

WORK UPDATES *by Jack Glenn*

Windows: The sashes for ten windows have been built and individually fitted to the window frames in the large Office (Building D), and six transom windows are completed. Mark South of the Nogales Ranger District has purchased the glass. The windows now require three coats of paint and the glass can be installed, then hardware can be installed. We hope to complete this project by summer and have the visitors' room operating.

Doors: Arnold and *PIT* volunteer Dick Reagan have completed reconstruction of nine doors. Next comes filling, sanding, and painting; doors and door casings must be matched; then hardware can be attached and the doors hung.

Work Days: Betty Leavengood, Don and Ginny Fisher, Tony and Joan Bratosh, Evalyn Neuhaus, Tom Gordon, and others have been patching adobe and doing many other jobs.

The Friday Crew: Joan and Tony Bratosh, Tom Tompkins, and Jack Glenn have been working on painting projects, adobe patching, and window and door reconstruction.

Arnold Franks' Projects: Arnold works on every project, does *Friends* paper work, buys supplies, gives tours, etc., Thursday through Monday. Of course he then has to play catch up on his home life and projects. Need I say

more? An extra big thank you to him and to Arlene Franks, our treasurer.

HELP WANTED (and NEEDED)!

by Mary Farrell

Our current board of directors has been stellar! During their tenure, membership has doubled, contributions of materials and money have increased substantially, and there has been very impressive progress on stabilization and restoration work at the Camp. But it's time to let our fine officers have a break, and catch up on other parts of their lives (or, as is luckily the case, on other parts of their Kentucky Camp work). Their terms end June 30. Consider: maybe it's YOUR turn!

Choose your mission from the list of the officers in our by-laws:

President: presides over meetings, cosigns checks, and is the main spokesperson for the chapter.

Vice President: assumes the duties of the president when the President's absent.

Secretary: keeps the records and meeting notes.

Treasurer: responsible for receiving, safekeeping, and disbursing funds; prepares financial reports.

Director at Large: the principal back-up for vacant officer positions and for special projects.

Coordinator: provides an extra communication link between Forest Service and Friends;

MANY THANKS!

The *Friends* and the Forest Service are very grateful for these recent donations:

- New member **Robert Mullens** has contributed a fine wooden desk and chair to be used in the visitors' room.
- The **Dunn-Edwards Corporation** of Tucson, through Manager **Michael Ormsby**, donated 15 gallons of paint for use on woodwork. This high-quality paint will help protect the woodwork, preserve the careful restoration work we have been doing, and provide many hours of fun work for *Friends*.

facilitates and expedites special projects.

Talk to the current officers to find out how much time the jobs take, if you like; they are listed in the masthead on page 7. *Please* call to let us know you are interested – we want you!



FOREST SERVICE NEWS *by Mary Farrell*

Many *Friends*, led by Joan Bratosh and Ginny Fisher, have labored diligently and creatively to transform the little Forest Service trailer into a cozy retreat. The trailer served as caretaker Arnold Franks' quarters for several years before the new *Friends* trailer was donated by Dick Sabad of the Voyager RV Resort for the caretaker's use.

The Forest Service, with input from *Friends*, decided it'd be nice to keep the Forest Service trailer on site, using a second set of hook-ups

the Nogales Ranger District had installed. For one thing, we had recruited *Passport in Time* volunteers to serve as temporary caretakers to give Arnold more breaks, and more help. For another thing, *Friends* staffed a very successful and popular "temporary caretaker" program in August before Arnold returned from vacation, using the new *Friends* trailer. We thought additional *Friends* might like a chance to stay overnight at the site, and by using the Forest Service trailer we could give the site extra caretaker coverage without disturbing Arnold's home-away-from-home.

Joan and Ginny, with help from Don Fisher and Tony Bratosh, transformed the interior of the old FS trailer with cleansers, rug shampoo, paint, new curtains, slipcovers, wallpaper, and fixtures. Windows and screens were repaired or replaced, storm windows added for the winter, water lines insulated.



Dick Lord Photograph

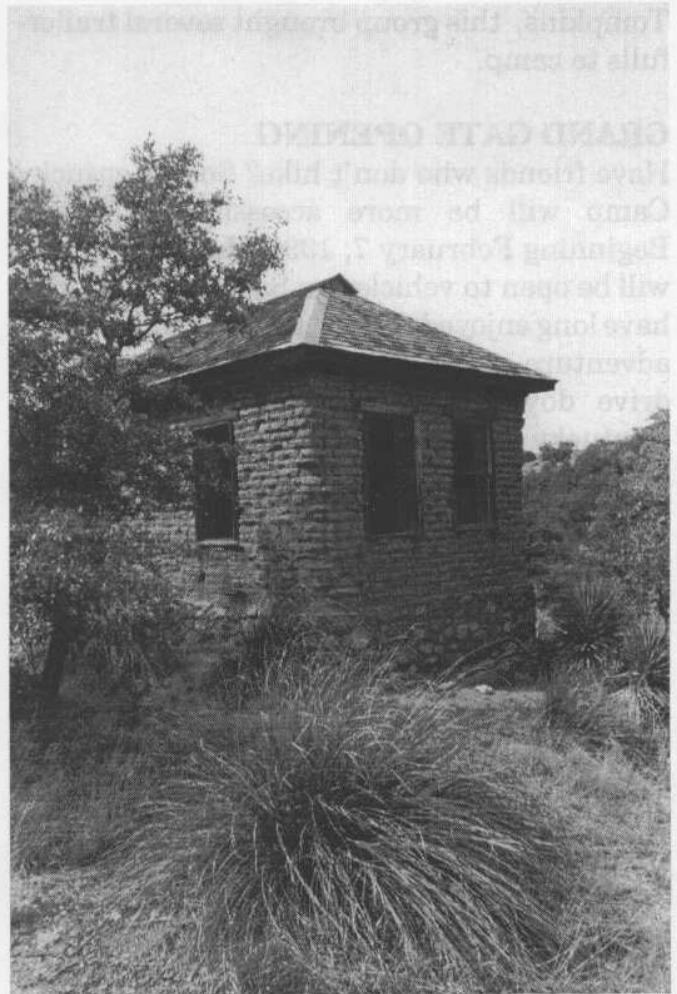
Our first *Passport in Time* volunteer, Ed Hanson from Colorado, stayed in the trailer in early December for almost a week, but a delay in the FS radio installation and bad weather chased him out just a little bit early. *Friend* Betty Leavengood stayed at the trailer Dec. 21-23 to work on her latest book, and pronounced the accommodations lovely, and cozy even through a snowstorm! Mark South, Arnold Franks, Jack Glenn, Don Marion, and Tom Tompkins moved the trailer slightly uphill to improve the sewer connection and screen the trailer a little better from the Arizona Trail.

But by the time the next *PIT* volunteers, Don and Wanda Black, arrived, the cold weather and the move had taken a toll on the aging trailer, causing some very inconvenient flooding. Arnold and the *Friends'* trailer provided some temporary relief until the trailer crew, led by the intrepid Mark South, could return to help the Blacks repair faucets, toilet, and water heater.

So the crisis was averted and the trailer was habitable by the time *PIT* volunteer Richard Regan arrived, freeing his time to help Arnold with many projects. We have *PIT* volunteers scheduled through mid-April, and many more *PIT* applicants, but *Friends* also have a chance to sign up if they like; please call Mary at 670-4564 if you're interested in reserving time in the trailer for any time from late April on.

PORCH PROGRESS

Once and future *Passport in Time* volunteer and current *Friend* Ken Haber has been working with architect Monte Greene and Supply King Mark South to head up the porch reconstruction project. Although most of the actual construction is scheduled for the *PIT* project, April 16-20, some of the preliminary work has begun. We hope to complete consultations with the State Historic Preservation Officer by mid-March, so building preparations can proceed in earnest.



Dick Lord Photograph

PASSPORT IN TIME OPPORTUNITIES

The Forest's 1998 *Passport in Time* project is scheduled for April 16-20; sign up now to help supervise, train, and entertain our *PIT* volunteers, who include wonderful people from all over the country. One focus of the *PIT* will be building Cabin C's porch, but we'll have a variety of other projects, depending on the supervisory skills we can provide.

BUILDING MATERIALS

Mark South brought a crew of "Senior Community Service Employment Program" strongmen to pick and shovel into our borrow sites to provide clay and sand for brick-making and patching adobe. Working with Kathy Makansi, Mary Farrell, Jack Glenn, and Tom

Tompkins, this group brought several trailer-fuls to camp.

GRAND GATE OPENING

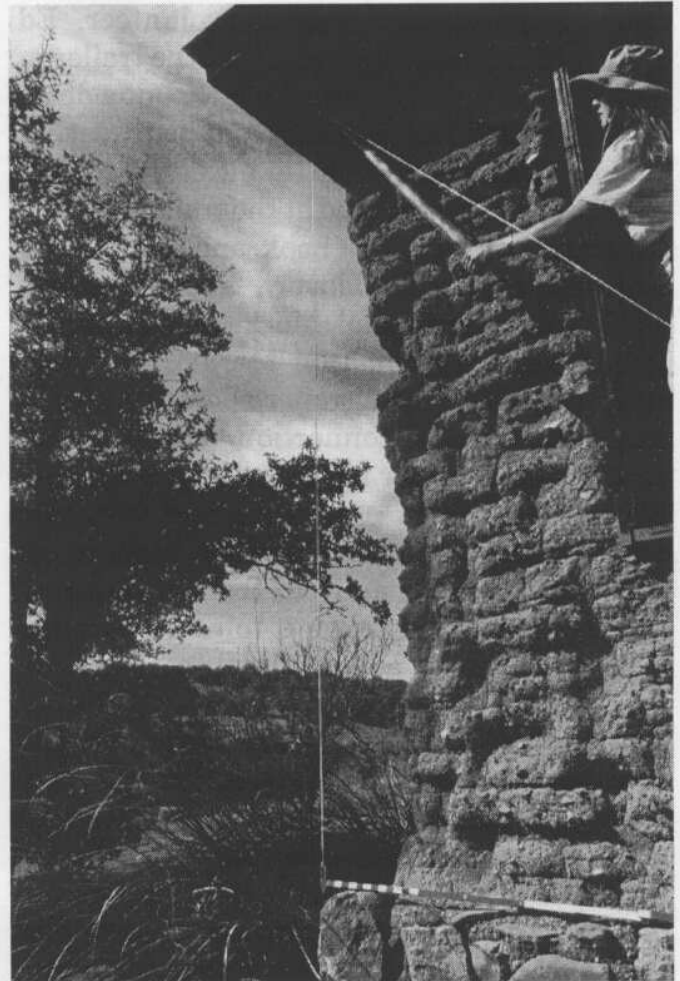
Have friends who don't hike? Soon Kentucky Camp will be more accessible to them! Beginning February 7, 1998, Kentucky Camp will be open to vehicles on Saturdays. *Friends* have long enjoyed the privilege (or endured the adventure, some would say) of being able to drive down the last 1/4 mile of road to Kentucky Camp. The Forest Service put a *Friend*-friendly lock on the gate so volunteers could drive in for workdays and carry in tools, supplies, and provisions. Occasionally other members of the public request vehicle access, for people who would otherwise not be able to visit the site.

Because we are so fortunate as have Arnold Franks as permanent caretaker on duty so much of the time, and other *Friends* and *PIT* volunteers to help him, we can offer this access more frequently. Our unlocked gate policy will be on a trial basis: if we are so fortunate as to get *too* many visitors on Saturdays because of it, we'll begin limiting the number of vehicles that are allowed down at the site at any one time. Forest Service plans to re-blade the road and the old parking area above the office, so that cars can be kept away from the buildings (and out of visitors' photographs).

If Saturday visitation increases substantially, it might be a good opportunity for costumed interpreters and tour guides, and even living history interpretation!

A sign at the gate will provide some warnings and rules, familiar to most *Friends*:

- The road is rougher and narrower than Forest Roads 163 and 4113; if you have a low-clearance vehicle, you may prefer to park here and walk down.
- Please close the gate behind you.



Kathy Makansi, the Forest Service's new *Friends of Kentucky Camp* liaison, documenting erosion at the Gold-processing Building. Kathy will be the liaison while Mary Farrell coordinates the April *PIT* project and works on various other Forest Service projects.

- This section of road is part of the Arizona Trail. Please yield to horseback riders, mountain bikers, and hikers.

When you visit, please keep certain things in mind. The buildings are old and deteriorated— if you go inside, do so cautiously and gingerly. Floorboards may give way, and rattlesnakes sometimes lurk inside. Historic artifacts and structures as well as the modern building materials for reconstruction work are protected under Federal law. Mineral rights are privately held, so no prospecting or panning is allowed. Finally, the usual rules for use of the Forest apply:

- All pets must be on a leash;

- No guns or other weapons may be discharged within 150 yards of the site;
- Since there is no garbage pick-up, pack out your own trash.

Information about Kentucky Camp is available at the site. Please sign the guest register; we welcome your comments, and hope you enjoy your visit.

VOLUNTEER HOURS 1997

Feeling tired lately? Maybe you've been part of another record year of public support for Kentucky Camp: in 1997, we clocked in 4,436 hours caretaker time, 3,525 *Friends of Kentucky Camp* time, and 180 hours Site Steward time. That's over 1,000 days!

MARK YOUR CALENDARS!

The next work days are **February 14** and **March 14**. There will be all kinds of fun chores to choose from, including:

- ☞ help prepare for porch building
- ☞ sand, paint, and install restored doors
- ☞ clean and paint ceiling molding
- ☞ patch and repair adobe walls
- ☞ plus many other important activities



~~~~~

The *Friends of Kentucky Camp*, a chapter of the Coronado National Forest Heritage Society, is a non-profit organization established to help in the preservation and interpretation of Kentucky Camp. *Friends* sponsor work days, coordinate volunteer activities, and conduct and supervise stabilization and preservation, in cooperation with the Coronado National Forest.

*President:* Arnold Franks (520) 294-9783

*Vice-President:* Jack Mutchler (520) 889-2500

*Secretary/Editor:* Chip Llewellyn (520) 885-8099

*Treasurer:* Arlene Franks (520) 294-9783

*Director at Large:* Tom Gordon (520) 325-2973

*Coordinator:* Jack Glenn (520) 625-5102

*Forest Service Liaison:* Kathy Makansi (520) 670-4522

*Forest Service PIT Coordinator:* Mary Farrell (520) 670-4564

*Nogales Ranger District Contact:* Mark South (520) 670-5496

Visit Kentucky Camp on the internet at <http://www.Azstarnet.com/public/nonprofit/coronado/Intro.htm>.

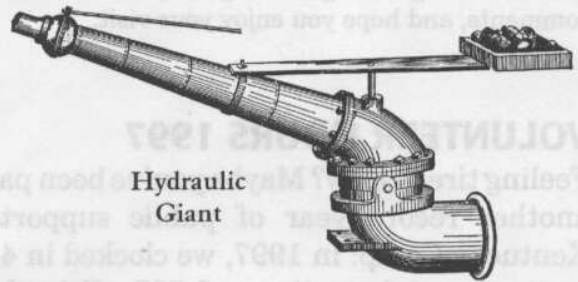
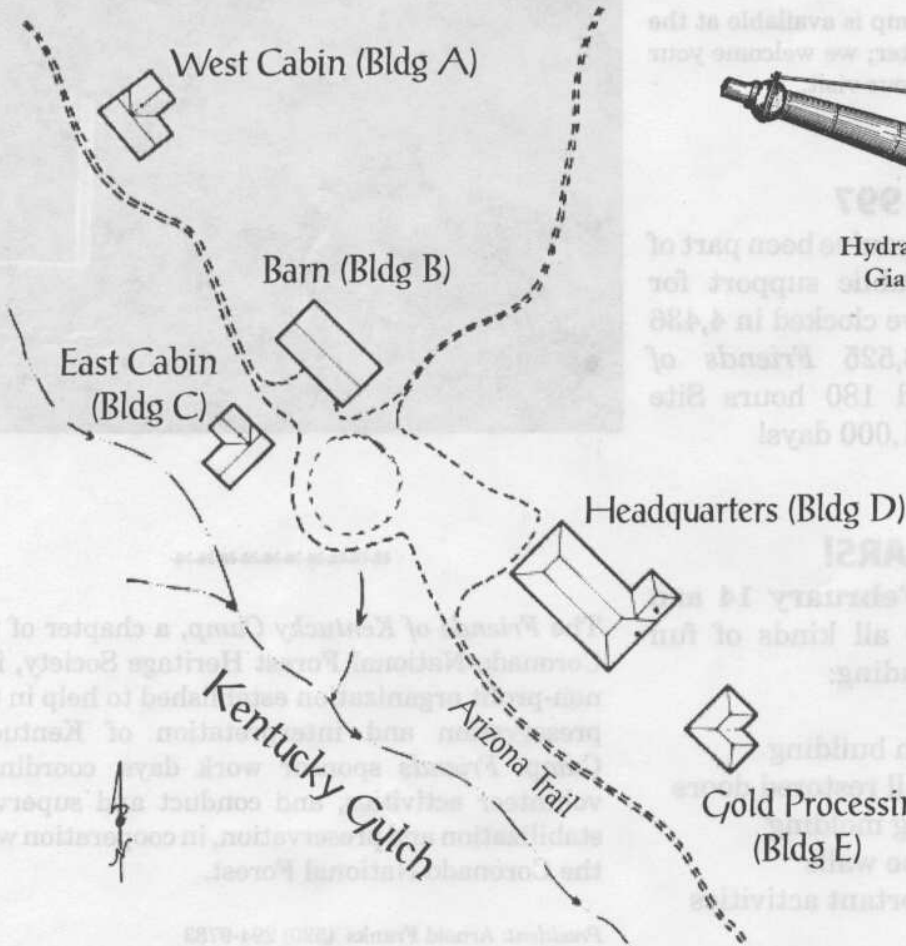
Visit the *Friends of Kentucky Camp* Homepage at <http://www.rtd.com/~arclight/fkcindex.htm>.

See past issues of the Kentucky Camp Chronicle at <http://www.azstarnet.com/~patish/chrondx.htm>.

~~~~~



SANTA RITA WATER & MINING COMPANY KENTUCKY CAMP, ARIZONA



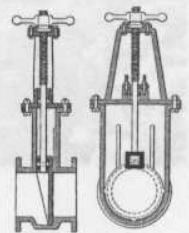
Hydraulic
Giant



Hydraulic
Elevator



Coronado National Forest
Supervisor's Office
300 W. Congress St.
Tucson, Arizona 85701



Water Gate