

KENTUCKY CAMP



CHRONICLE



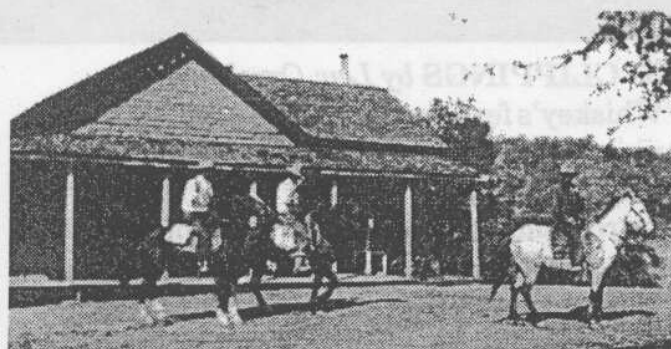
Newsletter of the Friends of Kentucky Camp

October 1997

Howard Cearfoss Memorial and Friends' Potluck Slated for October

The *Loners on Wheels*, dear to Howard Cearfoss's heart, will work at Kentucky Camp in Howard's honor on October 10. Projects include painting some of the refurbished woodwork, as well as mud patching, one of the activities at which Howard excelled (while delighting his co-workers with stories about flying in early open-cockpit airplanes and other adventures). The *Loners on Wheels* will return Saturday morning, the 11th, to help us honor Howard, our first Lifetime Member, a great and wonderful person. We have a plaque ready for presentation at 10:30. We hope all members possible will be present in memory of Howard.

The generous donation that Howard bequeathed to the *Friends* has already helped supply the door and window replacement project; it will also go a long way toward getting materials for the Cabin C porch, which we hope to reconstruct in April during the *Passport in Time* project. Monte Greene has produced detailed architectural drawings to guide the reconstruction. More volunteers are



Cabin C during the ranching era.

needed to get ready for this project! Contact Mary Farrell at 670-4564 to sign up.

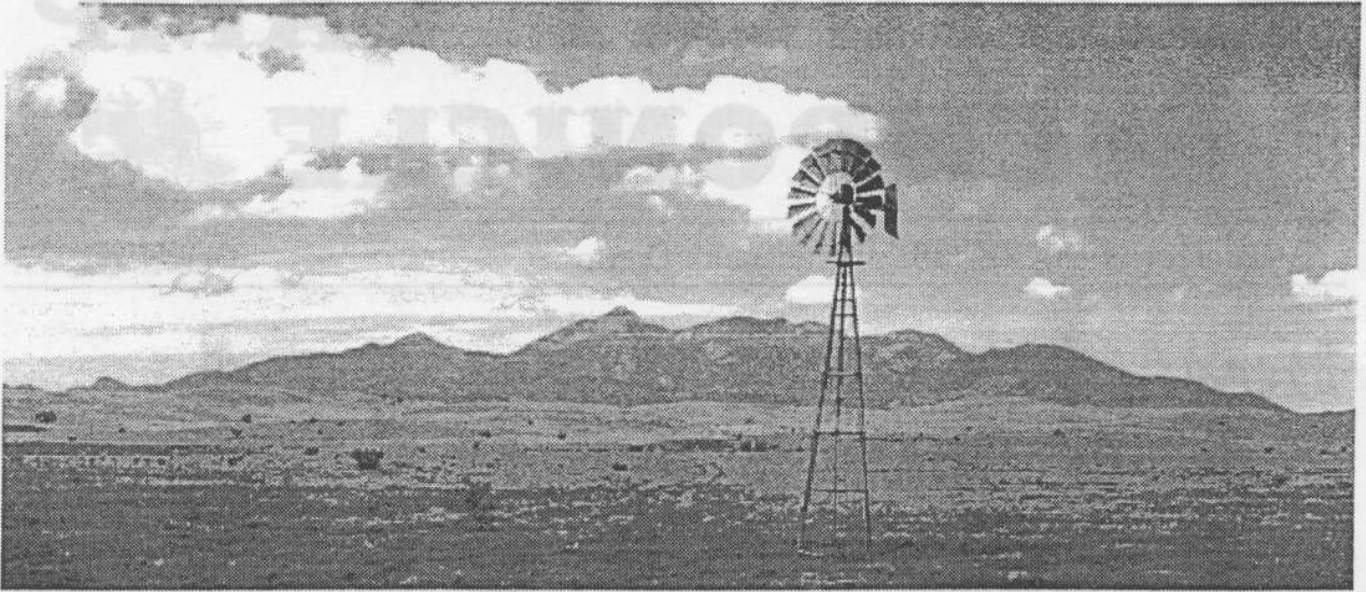
POT LUCK AND WORKDAY OCT. 11

Saturday there will be plenty of sanding and painting for *Friends* to do, no matter how much the *Loners on Wheels* get done on Friday. We also hope to install another transom, and, as always, there's plenty of mud work to be done. Painters: bring rags, coffee cans, and your favorite paint brush for latex paint.

Best of all, there'll be a potluck for lunch! *Friends* officers will furnish hamburgers, hot dogs, buns, paper plates, plastic forks, etc. Other members are asked to bring a picnic dish to share. Contact Arlene Franks 294-9783 or Robin Mutchler 889-2500 to let us know if you will attend and what you're bringing, or to get ideas on what to bring.

Welcome to New *Friends*!

Johanna Burton	Elvie and Ruby Loewen
James Eisinger	Jack and Nikki Logan
Bill Gillespie	Pete and Judy Van Cleve
Susan Jones	Ann Ward
Margie Parra and Val Jordon	
Jonathan and Patricia Benjamin	



KC CLIPPINGS by Lew Orrell

"Whiskey's fer drinkin', water's fer fightin'" an opinion with which McAneny and Stetson would have readily agreed. Their struggle to control enough water for hydraulicking at Kentucky Camp never led to fisticuffs or gunplay, though they did pay through the nose for water rights from their Greaterville neighbors, Magee and Anderson. Stetson just may have been snookered in this deal but that's a story for another time.

The source of the water appropriated for the mining at Kentucky Camp was the watershed formed by the southern portion of the Santa Rita Mountains of which the most prominent are Mounts Wrightson and Hopkins. Of these oft snow-tipped stalwarts, at least Wrightson, says Mary Farrell, can be seen "from all over southern Arizona." Thus they serve a dual function: examples of nature's grandeur and symbolic reminders of the historical and pioneering importance of the region surrounding Kentucky Camp.

Mount Wrightson had long been known as "Old Baldy" but was renamed to honor, along with Mount Hopkins, two miners who met violent deaths at the hands of marauding Apaches. During the 1850s and 1860s they had been successfully mining on the western

slopes of the Santa Ritas, almost opposite Kentucky Camp. The mines were some old silver mines dating to the Spanish missionaries. Trouble with the Indians was an ever-present risk which had been eased when Federal troops were stationed throughout the area. However, in 1861 Washington began withdrawing the military for duty on the eastern battlefields of the Civil War. The Apaches moved in as the troops moved out. Wrightson and Hopkins refused to abandon the mines and their investors and paid dearly for their loyalty.

In naming the tallest peak after Wrightson, he was being honored not only for being among the many Arizona pioneers who forfeited life in pursuit of their faith in the future of this region but as well for his significant contributions to the development and realization of the Territory of Arizona. More about this later.

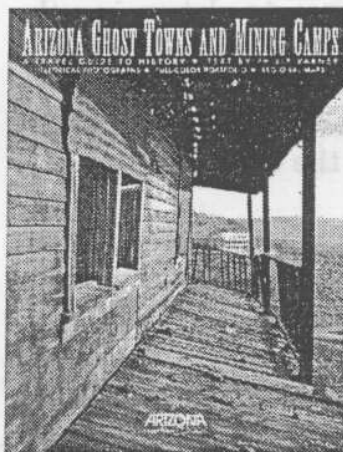
WANTED

Would-be carpenters to help with windows and doors and other woodworking projects at Kentucky Camp. Meet at the site Fridays, starting October 17.

GOOD PUBLICITY

Kentucky Camp is highlighted in two books by members of the *Friends of Kentucky Camp*, both published in the last few years:

ARIZONA GHOST TOWNS AND MINING CAMPS: A Travel Guide to History, by Philip Varney, Arizona Highways, 1994. This



book lives up to the ambitious promise of its subtitle, with ample historic photographs, stories, quotes, and specific travel directions. The stories and information range from broad historical themes to delightful arcane trivia, well complemented by a

portfolio of photographs of characteristic *Arizona Highways* quality.

HIKER'S GUIDE TO THE SANTA RITA MOUNTAINS by Betty Leavengood and Mike Leibert. Pruett Publishing Company, 1994.

HIKER'S GUIDE
to the
Santa Rita Mountains



Curious about the flora and fauna, the histories and mysteries of Kentucky Camp's neighbors? This book has it all – the 37 hikes described come complete with maps, hiking hints, directions, difficulty ratings, and plenty of intriguing stories about the people and places of the Santa Ritas. Betty and

Mike's tours have inspired quite a few people to join the *Friends*; read the book and you'll be inspired to check out other sites in this range.

GHOST TOWNS 1998 CALENDAR

Browntrout Publishers of San Francisco have put out a 1998 calendar with 12 gorgeous photographs of ghost towns. Kentucky Camp is featured in April, with a low-angled photo of Cabin C by Patrick Fischer. Other Arizona sites depicted include a Duquesne house, a Young school/church, and Clifton's Lyric Theater. Ghost towns from New Mexico, California, Utah, Nevada, and Montana are also represented. The calendar is available at local bookstores, and would make great holiday gifts!

MORE PUBLICITY

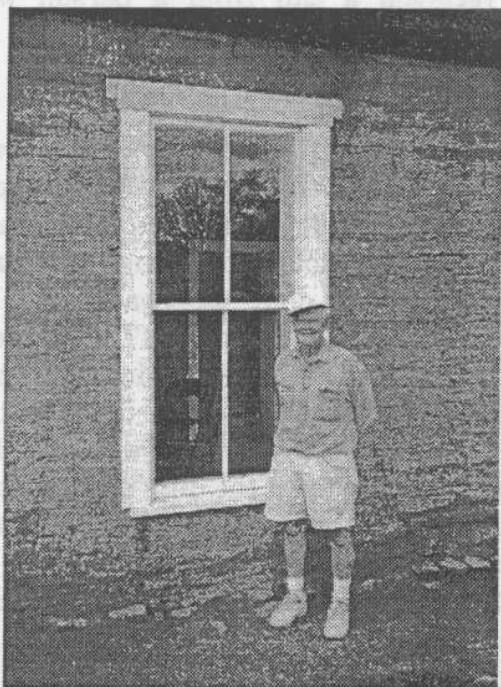
On September 22, the *Arizona Republic* featured Kentucky Camp on the front page of the "Life" section, in an article by Sam Lowe of the Lowe Road series. Sam learned about Kentucky Camp from Monte Greene and was given a grand tour of the site by Mary Farrell, Arnold Franks, and Kathy Makansi. The morning the article was published the Forest Service received a call from a person who wanted to know where to send donations!

PRESIDENT'S CORNER by Arnold Franks

The past year has been a very productive year for Kentucky Camp, thanks to the many *Friends*. Windows, doors, painting, mudding, steps, rock walls, door approaches, GPS surveys, caretaker duties by the PIT volunteers and *Friends* and the efforts of Monte for the group trailer and the architectural plans for the porches. This is due to our desire to see this wonderful site raise from the dust and ashes of the past. All of your efforts are so much appreciated. I look back to when I started in May 1992 and so much has happened, especially in the last two years. Again, from myself and the Board of Directors, who work behind the scene and are not always seen or heard, thank you for a wonderful year. May our next be even greater.

PERSONNEL NOTES by Jack Glenn

Billee and Frank Hoornbeek will be moving to Oregon soon. With intrepid perseverance, Billee, our first President, spearheaded our drive for non-profit status. She set up the "Coronado Heritage Association" for future Friends groups, so others wouldn't have to struggle with the same red tape and expense. Already some volunteers are considering taking advantage of this opportunity to form "Friends of Coronado Camp," to preserve an old adobe guest-ranch cabin in the Santa Catalinas. Frank has been the adobe MixMaster for all our major projects, coaxing the cement mixer and adoberos alike with his good humor and good sense. Working to replicate interior plastering, Billee has refined patching to an art and science. The Hoornbeeks' departure is a great loss for the Friends, but we will be ever grateful for their time and dedication these past years, and wish them the best of luck and a world of happiness in Oregon!



Jack Glenn by one of the windows now installed in Building D. Jack's been working on this project with Jim Eisinger, Tony Bratosh, June PIT caretaker Doug Jansz, and others.

Linda Peters Roslund is the daughter of Eugene George "Gene" Hummel and Alvessa Marie Ochoa and granddaughter of Louis Gottlieb Hummel and Emma Marie (Yockey) Hummel. Linda furnished the geneology and photos we have for the Hummel family, and the photos of the buildings were used by our architect, Monte Greene, to determine the design for the missing porches. Linda and Billee, along with Arnold, were instrumental in starting our historical research of the Hummels and other old timers in the Greaterville area.

Don and Ginny Fisher have been studying up on adobe techniques to help fill the vacuum left by the Hoornbeeks' departure. Adobe work is a huge and constant job which uses lots of different skill and energy levels. More volunteers are always needed, so please contact Don and Ginny, or come to a workday!

DONATIONS

When the *Friends* were just getting organized in 1995, one of our most immediate problems was to incorporate. Once we incorporated, we could solicit tax-deductible donations. But incorporation cost \$200, and we didn't have enough money. Saving the day, **Jonathan and Patricia Benjamin**, relatives of Billee Hoornbeek, sent us a \$100 gift! Again this year the Benjamins have sent us a donation. Many thanks to the Benjamins, you are two of our favorite people! Now if we can just get you to leave that cool San Francisco coast and visit Kentucky Camp!

Jim and Elaine Childs have donated an 1880s wood stove, a septic tank, tongue and groove lumber, and dimension lumber. Jim has also volunteered to haul adobe-making dirt, which we'll need for bricks and the extensive patching needed at Cabin C before the porch can be built.

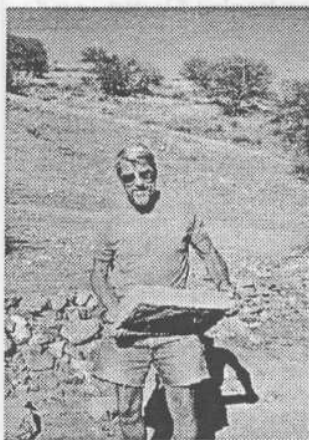
PASSPORT IN TIME SET FOR NEXT APRIL

The next Kentucky Camp *Passport in Time* (PIT) project is scheduled for April 20-24, 1998. The big project will be rebuilding Cabin C's porch! There will also be other woodwork, more mudding and patching, and survey and recording. The *Friends of Kentucky Camp* were crucial to the success of the 1997 PIT, and the Forest Service is counting on *Friends* help again. In fact, many things need to be done in advance to prepare for the PIT project. Come to a monthly workday, or call Mary Farrell to find out how you can help.

PIT TEMPORARY CARETAKERS

Some of the new ideas, insights, and talents of our enthusiastic temporary caretakers recruited through the national *Passport in Time* program to cover the site this past summer are evident in the new interpretive display in the visitor room, restored windows,

and safe electrical wiring for the new trailer. The program would not have worked without *Friends* like Jack Glenn, who welcomed volunteers and got them lined out with projects, and Tom Gordon, who provided breaks so they could restock supplies or check out other sights in southern Arizona.



July Caretaker
Bob Morris

This year, we're looking at shorter terms for the PIT temporary caretakers, to provide more coverage for the site and to give Arnold more frequent breaks. This is one of the most popular PIT projects of the season – the Forest Service has already received numerous inquiries and applications.

AUGUST WORK DAY REPORT

Don Fisher and Tony Bratosh worked on the trailer roof and flashing so that the awning could be installed; Betty Leavengood, Ginny Fisher, Joan Bratosh, and Heather Thrall worked with Forest Service GPS expert Travis Pasqual to map features in the Boston Gulch drainage. Arnold Franks, Jack Glenn, and Monte Greene worked on plans for porch and door restoration. Jeff and Dan Burton and Nicholas Brandman backfilled the archaeological excavation area behind Building D, and Mary Farrell and Jeff Burton built some new steps down to the adobe mixing area.

SEPTEMBER WORK DAY REPORT

Twelve people came out for the September 13 workday. Ginny Fisher and Kathy Makansi and her guests, the Doumas family, patched walls in Building D. Don Fisher, Jack Glenn, and Arnold mounted window and door casings on Buildings C and E. Tony Bratosh and Jack Mutchler sanded and painted window casings in Building D. New member James Eisinger along with Justin and Jack Mutchler sanded and repaired four doors which are now ready for the



Nicholas Brandman moving dirt.

panels. Tom Gordon and Polly Davidson worked on the rock walls and all are now in good shape. Jack Mutchler repaired the roof of the trailer. Arnold has mowed the entire area once and has started the second cycle of mowing.

FS TEAM DECISIONS *by Mary Farrell*

When Kentucky Camp became part of the Coronado National Forest in 1989, there was a lot of debate about what to do with it. Should it be razed, or closed to the public as a safety hazard? Should it be left as a ruin, or restored? Should it be a living history site, or a conference or training center? Should it be managed by a concessionaire, who could use entrance fees to maintain the site?

Forest Service specialists in interpretation, design, history, archaeology, and recreation converged on the site in 1991 to discuss these issues, and came up with the Kentucky Camp Interpretive Plan. Some of the 1991 plan's recommendations:

- Restore the three best-preserved buildings.
- Do only minimal stabilization on Cabin A and the barn so people can get a better feel for how the buildings looked at abandonment.
- Do living history, focusing on the mining story, with everything from buckboard rides to festivals.
- Keep modern intrusions (such as interpretive signs, directional signs, kiosks, restrooms, benches, permanent caretaker quarters) outside the site.

But restoration proceeds slowly, and various Friends have come up with several ideas to provide better interpretation in the meantime.

This August, most of the original interpretive plan team reconvened at Kentucky Camp to consider some of these ideas, to review the original plan, and to consider the potential for "fee demos" at Kentucky Camp (the fee demo program, initiated by Congress, directs the Forest Service to collect money from the public at designated sites to provide better services).

The team's recommendations:

- Keep the current interpretive plan's final "vision" of living history as a long-term goal, but meanwhile emphasize other interpretation.
- Install small interpretive kiosk near donation tube, with basic information, and keep more detailed information in the current visitor room.
- Construct a flush toilet for visitors near the existing pumphouse; try to raise money for it through Friends of Kentucky Camp, and apply for matching grants.
- Meanwhile, keep the Forest Service trailer on site so the toilet can be used during work days.
- Postpone implementation of any "fee-demo" project at Kentucky Camp now, but include a "suggested donation \$2" sign on the kiosk.
- Consider a fee demo project at Cabin C once there is a public toilet and the rooms are restored, to generate funds to restore the rest of the site, and to give people an opportunity to stay in a turn-of-the-century cabin.
- Remove the Forest Service trailer as soon as we have public toilet facilities.

- Unlock the gate at the top of the hill at designated times so people who cannot walk down can visit the site, when the caretaker is there.

Questions or comments, call Mary Farrell of the Forest Service at 670-4564.

MARK YOUR CALENDARS!

The next work days are October 11th and November 8th. There will be all kinds of fun chores to choose from, including:

- ☞ sand, paint, and install restored doors
- ☞ in November, build the "kiosk" (outside bulletin board) to provide a little information and encourage donations
- ☞ clean and paint ceiling molding
- ☞ patch and repair adobe walls
- ☞ linseed oil signs and posts
- ☞ plus many other important activities



Tony Bratosh and Don Fisher working on the *Friends'* trailer.

Travis Pasqual may be back to lead more GPS expeditions into Boston Gulch. And *Friend* Dave Brown has offered to bring out his "Konga Hatta" transit to demonstrate its use while mapping some of the outlying features of Kentucky Camp.

SAFETY ALERT!

Chiggers, the microscopic creatures with the big mouths, thrive in the green grasslands of the Santa Ritas until frost. Best defense is long pants and boots, augmented by insect repellent or "flower of sulfur" sprayed or dusted around the ankles and, if the grass is tall or if you want to sit down, the waist and wrists. Although most stores don't stock the flower of sulfur, pharmacists can order it and get it for you within a couple days. But reading the warning label on the jar may inspire you to look up *Friend* Ginny Fisher, who has been researching herbal repellents.



The *Friends of Kentucky Camp*, a chapter of the Coronado National Forest Heritage Society, is a non-profit organization established to help in the preservation and interpretation of Kentucky Camp. *Friends* sponsor work days, coordinate volunteer activities, and conduct and supervise stabilization and preservation, in cooperation with the Coronado National Forest.

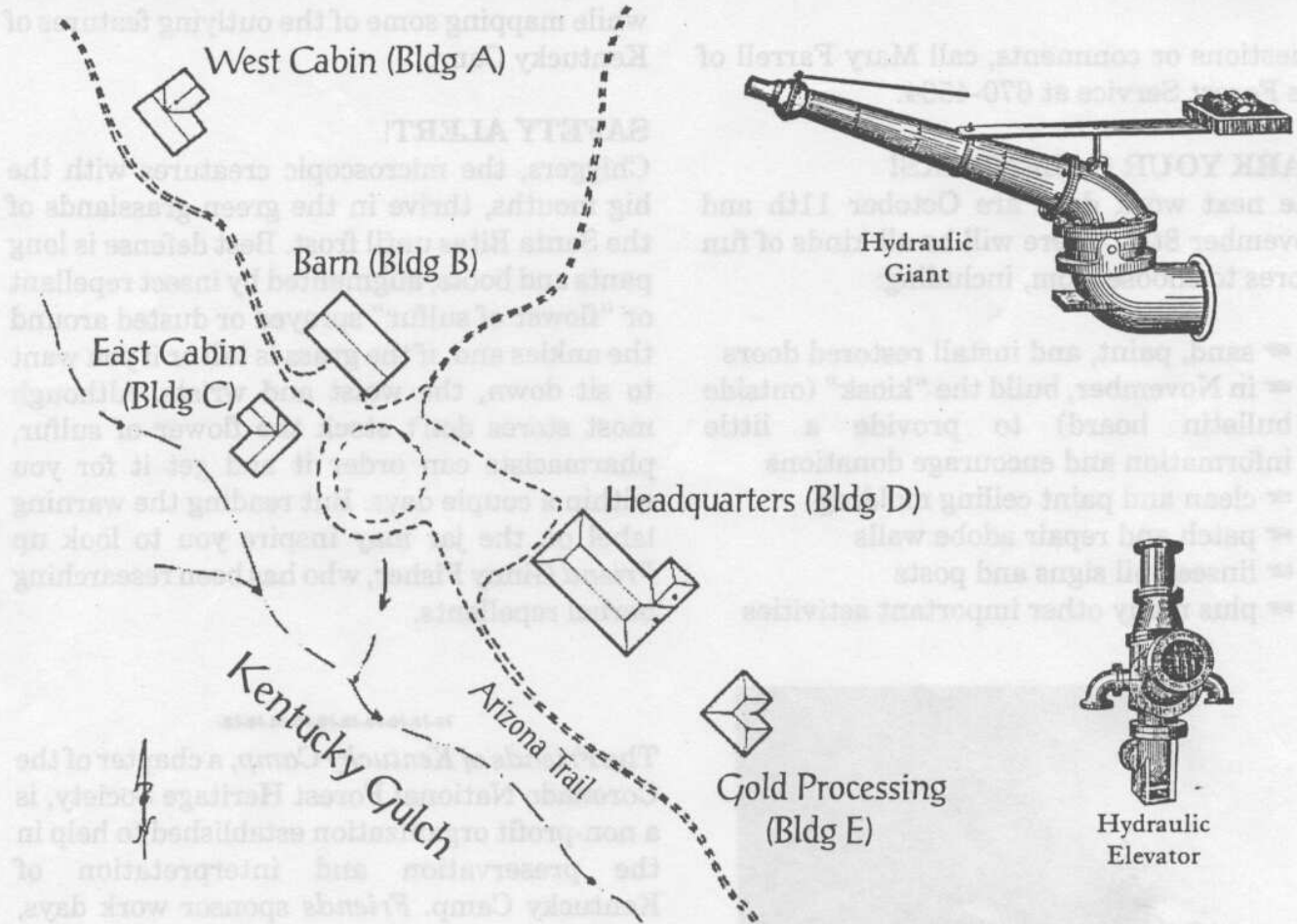
President: Arnold Franks (520) 294-9783
Vice-President: Jack Mutchler (520) 889-2500
Secretary/Editor: Chip Llewellyn (520) 885-8099
Treasurer: Arlene Franks (520) 294-9783
Director at Large: Tom Gordon (520) 325-2973
Coordinator: Jack Glenn (520) 625-5102
Forest Service Liaison: Mary Farrell (520) 670-4564
Nogales Ranger District Contact: Mark South (520) 670-5496

Visit Kentucky Camp on the internet at <http://www.Azstarnet.com/public/nonprofit/coronado/Intro.htm>.

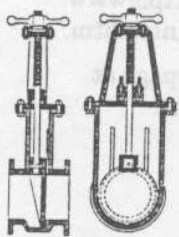
Visit the *Friends of Kentucky Camp* Homepage at <http://www.rtd.com/~arclight/fkcinde.htm>.



SANTA RITA WATER & MINING COMPANY KENTUCKY CAMP, ARIZONA



Newsletter Editor
Friends of Kentucky Camp
5819 E. Bellevue St.
Tucson, Arizona 85712



Water Gate