

# KENTUCKY CAMP CHRONICLE



Friends of Kentucky Camp Newsletter

September 2002

## Visions for the Future: KC's 100<sup>th</sup> Birthday and Beyond

By Mary Farrell and Mark Doumas

**YOU** are invited to help shape Kentucky Camp's future, by helping us brainstorm ideas, beginning at the **October 26, 2002** all-Friends Get-Together. If you've read the previous issues of the *Kentucky Camp Chronicle*, you'll remember that some of our members have shared their visions for Kentucky Camp on its 100<sup>th</sup> birthday, in 2004. At the picnic, you too can share your thoughts and participate in The Vision Thing.

The ideas we generate at the picnic will help the Forest Service update the 1992 KC Interpretive Plan. Many of the ideas set forth in that plan have been accomplished; others no longer seem as important. A concisely written vision of what Kentucky Camp should become and how it will be used, or an "Adaptive Reuse Plan," will help guide our month-to-month activities and decisions as we head into our Centennial Celebration.

Some of the issues identified in the 1992 Interpretive Plan are still open for discussion, and we invite your own views. The specific questions we're considering now include:

- **Level of restoration** – Should all the buildings be fully restored, or, as recommended in the plan, should some of the buildings be left as stabilized ruins? Or should we keep the current approach, which illustrates a wide spectrum of different options at different buildings?
- **Accessibility** – How can we make it easier for people in wheelchairs to see the site, without compromising the historic integrity? Should we build a new trail to the public toilet that would be wheelchair accessible, or should we install a second toilet near the original outhouse, along a

level path behind Building D? Can we institute other modifications to make the site more accessible for the visually impaired?

- **Ultimate Uses** -- How can Kentucky Camp be self-sustaining -- that is, how can it bring in the money needed for caretaker utilities and site maintenance? Can we use the Administration Building as both an occasional day-use or "retreat" rental in the cabin rental program and a (most-of-the-time) visitor center? Should the Assay Office be developed as a place to provide mining history information? How can we provide a variety of interpretation, to diverse audiences?

But what do **YOU** think? See Chris Schrager's article for more questions and ideas. If you can't come to the October 26 get-together, please feel free to write us or send e-mail. Friends and Forest Service have worked together to develop and implement lots of good ideas in the past decade, and we look forward to working together for years to come.

Don't miss Kentucky Camp's

Pot-luck Hoe-down,

Saturday, Oct. 26<sup>th</sup>!

Event Starts 10:00 am

Polls Close 11:00 am

Bring a dish to share and your own beverages

## FRESCO FINISHES II Mini-PIT

July 2002

by Jim Britton

*July 21, 2002 (Sunday):*

Marie and I arrived at Kentucky Camp at 2:30PM after the long drive from Mesa. We were the first to arrive. We would be staying in Cabin C and since the forest had been closed, the cabin had not been rented for over two months. The first task was to do a complete cabin cleaning; spider webs, mice "calling cards", and a thin layer of dust.

Susan Jones joined us later in the late afternoon. We had dinner on the front porch of Cabin C. It was a beautiful evening with a storm off in the distance. It rained off and on during the night. The next morning the rain gauge showed .025 inches.

*July 22 (Monday):*

Chris Schrager, Chris LeBlanc, and Peter (the plumber) arrived around 8:00AM with a ditch digger. They planned on installing a water line to the back side of the Administration Building. By the afternoon, it was decided that a backhoe was needed to make the trench.

Susan, Marie and I mixed mud and began working on Cabin C. We repaired some basal erosion, filled in around window and door frames and behind porch mop-boards.

Our amigos from Mexico arrived at 11:00AM. Rodolfo del Castillo, his wife Lupe and children, Rodolfo Jr. ("Fito"), Ilse, and Michel would be staying in the caretaker's trailer. Jorge Morales camped in a tent.

Rodolfo experimented by mixing various colors trying to match the blue designs on the walls of the "Blue Room" (Rm. #6) in the Administration Building. In the meantime, Jorge, Susan, Ilse and I applied final plaster mud to the walls in the "Brown Room" (Rm. #4). Marie and Lupe used window screen to sift a supply of dirt to be used in the final plaster coat.

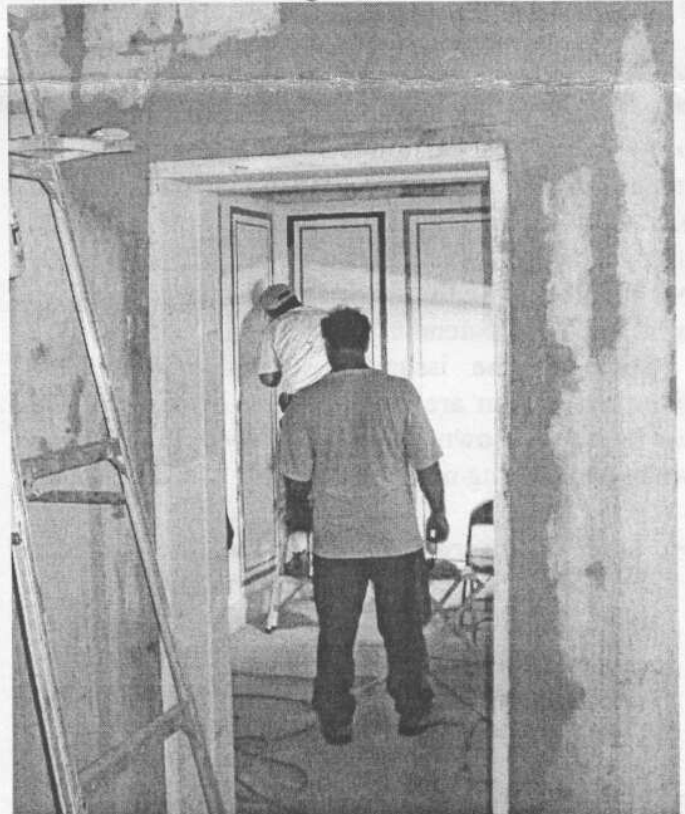
*July 23 (Tuesday):*

It rained some again last night bringing our total rainfall to .15 inches.

Rodolfo continued his mixing of colors and is getting close to the color he wants. The original wide stripe blue rectangular design consists of two different shades of blue. This wide stripe has edges that are darker blue than it's center. Rodolfo's plan is to paint the entire width with dark blue, then later

paint the center of the stripe with a lighter shade of blue, hence leaving the darker blue edges. The narrow stripe rectangle that is located inside the wide stripe rectangle is painted with a lighter shade of blue.

Based on analysis done in Mexico City, the original paint contained lime and various mineral colors. Rodolfo used the following colors in powder form: Cafe (brown), Lago (green), Carmin (red), Azul Cielo and Azul Celeste (shades of blue). Using various proportions of these colors with lime, his challenge was to mix the desired shades of blue. While he tested various combinations of these colors, the rest of us continued doing mud work. Some of us applied the final plaster coat in Room 4 while others replaced missing mud around window frames on the east side exterior of the Administration Building.



Looking from the Ochre Room, where fresh plaster repairs are visible, to the Blue Room, with its restored paint finish.

*July 24 (Wednesday):*

Yesterday's smooth final coat of plaster in Room 4 had a few hairline cracks. I decided to increase the



sand component of our mud formula in order to avoid these shrink cracks. The cracks can be easily fixed using a sponge float, however it is best if they don't occur at all. The new formula will be 5 parts dirt and 4 parts silica sand.

Today we all joined Rodolfo in the Blue Room to paint blue rectangles. Using various items as straight edges, we carefully painted the stripes. We avoided painting over any of the original paint that remained in place on the wall.

Jack Glenn and Arnold Franks arrived today to work on their window project. However, their progress was stopped by the saw which had a bad motor. I showed Arnold the green painted room inside Cabin A that I had noticed yesterday. They had never noticed it before. It had always been said the only painted rooms were in the Administration Building. We also discussed what should be done with all the various artifacts (pieces of equipment, etc.) laying around the barn. Whether to save or toss them will be decided at a later time.

*July 25 (Thursday):*

Beautiful morning!! It rained a little again last night bringing our total since Sunday to .215 inches. Mary Farrell, Chris Schrage, and Chris LeBlanc

arrived today. Mary will be staying overnight. Work today consisted of painting the blue stripes, spot plaster repair in Room 4, and some exterior mud work around windows on the east and south sides. Mary's Tucson friends, Judy and Acacia, joined right in and had great time becoming restoration specialists.

We had a big downpour of rain in the afternoon (.46 inches) bringing our total rainfall to .675 inches (you can probably tell by now that I was the official meteorologist for the week). The full moon was spectacular as it rose over the oak trees this evening.

*July 26 (Friday):*

Another beautiful morning. Today is the last scheduled day for the PIT project. Susan, Marie and I will head back to the "Valley of the Sun" and Mary will return to Tucson. Rodolfo, his family, and Jorge will stay two or three more days.

We all had a wonderful week working toward our goal of restoring the old mining camp. It gives one a great feeling of pride as we see the old structures slowly coming back to life. If you listen real hard, you might hear the old walls saying "thank you".



July Passport In Time ("mini-PIT") volunteers pose in front of one of their projects, the re-painted walls of the Blue Room.

# Friends' Support Does the Job

By Chris Schrager

The Friends of Kentucky Camp have a long and proud tradition of support for preservation and interpretation at the site, and this summer has been no exception. In fact, with the costs incurred by the Forest Service in fighting fires across the West forcing a freeze on spending, an agreement by the FKC Board to underwrite two projects this summer saved the day!

The projects, planned for the 2002 fiscal year, are part of an effort to accommodate the increasing numbers of visitors to the site. A new picnic area by the northeast side of the Administration Building is being outfitted with a sink and spigot; the water system can be expanded later if more facilities are desirable in the future. The area already has two beautiful picnic tables, courtesy of Glenn Haslett and Ed Buell during the March 2002 PIT project.

The second project is the re-routing of the lower portion of the access road. The last 150 feet of the current route are steep and rocky, and runoff from rain has rutted it and created erosion problems on the site below. Old photographs show a route making a more gradual descent, coming out between the Barn and Cabin A (the westernmost structure). This route crosses a shallow swale, requiring a culvert to keep the crossing from washing out.

Both projects were planned with a target of early summer to take advantage of the availability of a Forest Service backhoe, bulldozer, and operators. But one of the worst wildfire seasons in memory forced a postponement while equipment and personnel were diverted to the firefighting efforts. In response to the danger to both lands and visitors, the Coronado National Forest was closed to the public in late May. By early July, the cost of firefighting efforts nationwide had forced Forest

Service administrators to institute a freeze on non-fire-related purchasing for the remainder of fiscal 2002. At the time, part of the waterline had been completed, but it was decided to use the opportunity to replace the phone cable that brings service to the Caretaker trailer. Additionally, the arrival of the monsoons drastically reduced the need to keep equipment on fire duty, so a backhoe could be hired for Kentucky Camp -- but the culvert pipe still had to be purchased! If the materials couldn't be made available, there was no guarantee of the Forest Service having the funding to provide the equipment and personnel next fiscal year.

The Board moved quickly to authorize the purchase of materials to allow both projects to move forward. As a result of their support, the waterline has been installed from the pump house to the upper corner of the Administration Building. Future Volunteer Work Days will bring it to the location of the new sink.

At the same time, a better, more durable phone cable will connect to the trailer, and an upgraded power line will be installed from the pole to the pump house, trailer, and "PIT area." At the site of the rerouting project, the culvert has been installed, and the bulldozer needed to finish grading the new access route is expected later this month. Rather than risk a waste of the effort and money already invested, it was possible to move both projects much closer to completion thanks to the Friends of Kentucky Camp.

## What's Next?

Future plans call for re-vegetating the section of the current route that is being replaced, as well as installing boulder barriers at the hilltop parking area (just outside the gate) to direct traffic and stop the





erosion of the hilltop and slopes. A second vault toilet, at the former location of the outhouse, has been proposed, with an extension of the water line to supply a handwashing spigot. There is a wide range of opinions on the best future for the Assay Office. How much fixing up and electrification do people want for the Administration Building? Could it produce revenue as a rental for appropriate groups? Should it?

If you have **opinions, ideas, or comments** on the site's near and long-term plan, make them known.

The Get-together at Kentucky Camp on Saturday October 26th promises to address much more than slingin' adobe and electing officers. It's hoped that a look at the past 10 years will enable folks to present their vision of the next 10 years, 20 years, and beyond. You are encouraged to join the discussion; but even if you can't be there, make your voice heard! Mail your ideas, comments, and/or concerns to the Friends, or email them to [cschrager@fs.fed.us](mailto:cschrager@fs.fed.us). We will share your feelings with those in attendance.

## Ask the Forest Service!

*(An intermittent column inspired by occasional questions)*

**Q.** I just got my Passport in Time *Traveller* catalog, and don't see the annual spring Kentucky Camp PIT project listed. Isn't there still a lot of work to be done at the site? *(from Dick Pettigrew, Civil Engineer, New Mexico)*

**A.** YES, there's still a lot of work to be done at Kentucky Camp! Especially as we prepare for its Centennial Celebration in 2004. But the Forest Service has decided to take a break from the annual spring project, for several reasons. First, for the past decade we have been using nearly all our limited Heritage program funds at Kentucky Camp, and there are over 3,000 other sites on the Forest that need our attention, too. Instead of the one big KC PIT, we have scheduled several smaller volunteer projects around the Forest. We will begin work on CCC fire lookouts, record rock art with Cochise College, do another "Fresco Finishes Mini-PIT" at Kentucky Camp with the Friends and the conservators from INAH, and stabilize other historic sites on the Coronado. Some of our projects will be listed on the PIT web site, at [www.passportintime.com](http://www.passportintime.com). Second, the spring KC PIT was getting too popular for us to handle all the logistics. We can't bring ourselves to turn down past PIT participants, and we like the idea of "new blood," so the spring extravaganza had grown to as many as 70 participants. Even with the Friends' help, it takes us weeks of preparation and follow-up to pull it off, and last year we drove our beloved camp kitchen crew to exhaustion. Finally, we still hold monthly workdays at Kentucky Camp, so progress will continue, and volunteers will have opportunities throughout the year to do all of the tasks normally scheduled for spring.

P.S. to all: If you miss the big-group fiesta atmosphere of the annual spring PIT, feel free to organize a long work weekend or mid-week multi-day workshop at KC through the FKC! Other volunteer groups have used KC as a base for trail work, so we can be sure the Nogales Ranger District would allow a big camp-out of FKC volunteers there for a workshop, given enough notice. Forest Service archaeologists will still be able to provide guidance and assistance. And, you can check that same web site to sign up for other PIT projects across the country – maybe you will bring back new ideas and suggestions about how we can improve our own PIT projects in the future. *(from Mary Farrell, Forest Archaeologist, Coronado National Forest)*



## Windows Project Update

By Arnold Franks and Jack Glenn

Ongoing for five years, the Window Project started as an idea from FKC members Jack Glenn and Arnold Franks with support by Mary Farrell. It became a reality when deceased member, Howard Cearfoss, graciously left the Friends \$3,000 in his will. Thank you Howard, for the gift, wherever you may be, watching over us.

At this time, Jack and Arnold gathered all window sash pieces that were at Kentucky Camp and painstakingly inspected each piece. After accumulating pieces that were good, the Friends talked the Nogales Ranger District into getting us a table saw and a shaper. Mary Farrell, Mark South, and Don Marion, who supported us and aided us in our effort, accomplished this.

The next step was to purchase the required wood for the project, which was done after much running around and looking for good sources of quality lumber, which in this time is a difficult task. The meeting rails were fabricated from Arizona Sash and the remaining pieces were cut and shaped either at Kentucky Camp or in Jack Glenn's garage in Green Valley. The sashes were built and readied for installation.

While the sashes were being fabricated, the window casings were being readied in Building D. This was done with some difficulty and many hours of dismantling and then reconstructing. After the casings were squared and readied for the sash, the sash needed glazing.

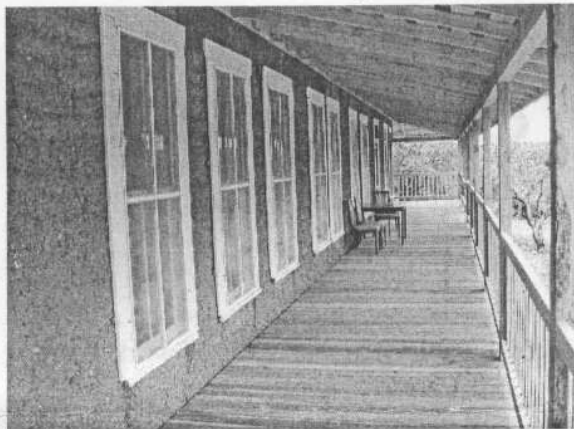
Through the efforts of Mark South, the glass, putty, and points were purchased and Jack delivered them to Kentucky Camp. This meant 48 sets of sashes that had to be glazed with 2 pieces of glass per each sash. It was a slow and dreary task.

After glazing them came the primer coat and then the first finish coat of paint. Now all was ready to begin the installation of the 13 sets of window sashes into the casings.

After dry fitting, sanding, planing, and juggling, the first sash was installed. Yes, this took considerable time and much patience, but it was accomplished. The first 13 windows were now installed, all hardware installed, and all window

sashes were operable and worked smoothly. Next came the construction and installation of the window screens. The building with windows and screens looked so different from the first time I looked at Building D with gaping holes where windows once sat. I believe Howard would be proud of what was accomplished.

No, the Window Project is not done yet. Starting last year, with Arnold, Jack and Mary putting their heads together, the second part of Building D's Window Project was started. The Forest Service bought us a New Drill Press with Mortise and Tenon bits, and they also purchased the wood for the required project.



With Mary's permission we set up shop in Jack's garage and again commenced to cut, assemble, and glaze the required number of window sashes for the back of Building D. This project started in July of 2002 and has been ongoing since that time. Despite many hours of running around and getting required tools and material this was accomplished.

All of the window sashes were then taken to Kentucky Camp and we were ready to start installation, when the Forest Service closed the District on account of the fire danger. We did lose time here, but when it was reopened we forged ahead and started hanging the windows. Now up to this time the parlor has all three sets of windows installed with all hardware, and they are fully operable. The dining room had one set installed. By the middle of September, the dining room should be complete.

That leaves the four remaining windows to be installed in the kitchen. With much luck this should be accomplished by the end of the year, but hopefully much sooner.

Also during this period, the windows were made for Building C. Further, all of the doors were rebuilt and repaired. All hardware used for this project was scrounged, purchased, and some donated.

This may seem like a long time to some folks, 5 years, but considering the obstacles that had to be overcome, it was a pipe dream that bore fruit. Now we can say that we are almost at our goal, to have windows and doors in two of our buildings.

Jack and Arnold can say that it was fun, in a way. It was a learning experience, which had hundreds of countless work hours, driving around and getting material, tools, planning, and hours of frustration.



## Quick, Close, Delicious, AND SCENIC:

### Come Volunteer Right in Tucson!

Can't leave town for a monthly workday? Don't want to get your hands muddy? Can't spare a whole day to donate to Friends of Kentucky Camp? Don't despair, there's still volunteer opportunities awaiting you! At a member's very conscientious suggestion, the Coronado National Forest has brought all the Friends of Kentucky Camp files to the Supervisor's Office, in downtown Tucson, so that the records can be copied. This way, we will have a backup copy of all important papers, just in case the Camp files suffer any vandalism, attrition, or rodent-chewing in those weeks we don't have a caretaker present. Vice-President Nancy Hough has begun the job of copying and indexing the files, but more volunteers are needed. Even one or two hours of work will help! The Supervisor's Office, open from 8 a.m. to 4:30 p.m. every weekday, is fully accessible with free parking, nearby bus stops, plenty of good lunch restaurants within walking distance, and a nice view from the 5<sup>th</sup> floor office. Call Kathy Makansi at 670-4522 to schedule your stint and get directions to the Federal Building.

## Missing MEMBERS BULLETIN

The Friends membership roster hit an all-time high of roughly 150 members some time ago, but Secretary Sandy Doumas realized that one of the reasons for our presumed popularity was the fact that we'd never purged the membership roster of those who hadn't paid dues for one, two, sometimes even three years! Sandy has therefore updated our roster with just those members "current" as of June 2002. What this means: you can check your mailing label to see if your own membership has expired, and then send in your dues. And, if you know former members who let their membership lapse but who might still be interested, let them know they'll be welcomed back with great rejoicing. And remember, all Friends, and friends and relatives of Friends, are welcome at the October get-together!

### It's Time to Vote!!!

#### See Enclosed Ballot for details

Ballots must be postmarked by October 15<sup>th</sup> to be counted (That's SOON! Show your support, show your enthusiasm, send in your ballot today)

## Membership Renewal

Enclosed is a check for \$ \_\_\_\_\_ made payable to Friends of Kentucky Camp for membership until 9/2003. Student (\$5), individual (\$10), family (\$15), contributing (\$25), supporting (\$50), or lifetime (\$200)

(If a mailing label is on the back side of this and your address has not changed, there is no need to fill this part out.)

Name: \_\_\_\_\_

Address: \_\_\_\_\_

City, State, Zip: \_\_\_\_\_

Phone: \_\_\_\_\_ Email: \_\_\_\_\_

Send check and this form to Friends of Kentucky Camp, 4320 North La Linda Rama, Tucson, AZ 85718

# Quick, Close, Delicious, And Scenic: Come Volunteer Right in Tucson!

Can't leave town for a monthly volunteer hour? Don't want to get your hands muddy? Don't want a whole day to devote to Friends of Kanabuck Camp? Don't want your shirt with volunteer opportunities written on it? At a member's very own suggestion, the Coronado National Forest has brought all the friends of Kanabuck Camp that are in the Tucson area to help us do some work that is fun and the reward can be huge. This way, we will have a backup crew of all volunteer power and we can do the work after our volunteer activities. We are not charging in those weeks we don't have a crew to help. Vice President John, who has been in the lot of copying and making labels for some volunteers we needed, has one or two hours of work will help. The Supervisor's Office has been a real help in every way. It is this opportunity with two parking spaces and a huge...

It's Time to Volunteer!

See Coronado Forest for details

Coronado National Forest  
Supervisor's Office  
300 W Congress St.  
Tucson, AZ 85701



## Membership Renewal

Renew in June of 03

Sandy and Mark Dumas  
4320 N. La Linda Rama  
Tucson AZ 85718